

SCS Auto VSC Administration

Efficient. Affordable. Easy. Your complete admin solution.

What our Clients say:

"SCS Auto has made us more efficient. It allows us to process sales and claims with fewer people than ever before. Its flexible product configuration enables our sales team to respond to market conditions rapidly."

Mary A. Gant
Senior Vice President
Old Republic Insured Automotive Services, Inc.

More reasons to use SCS Auto

SAVE on operating costs

BUILD new products quickly and easily

SCALE your business efficiently

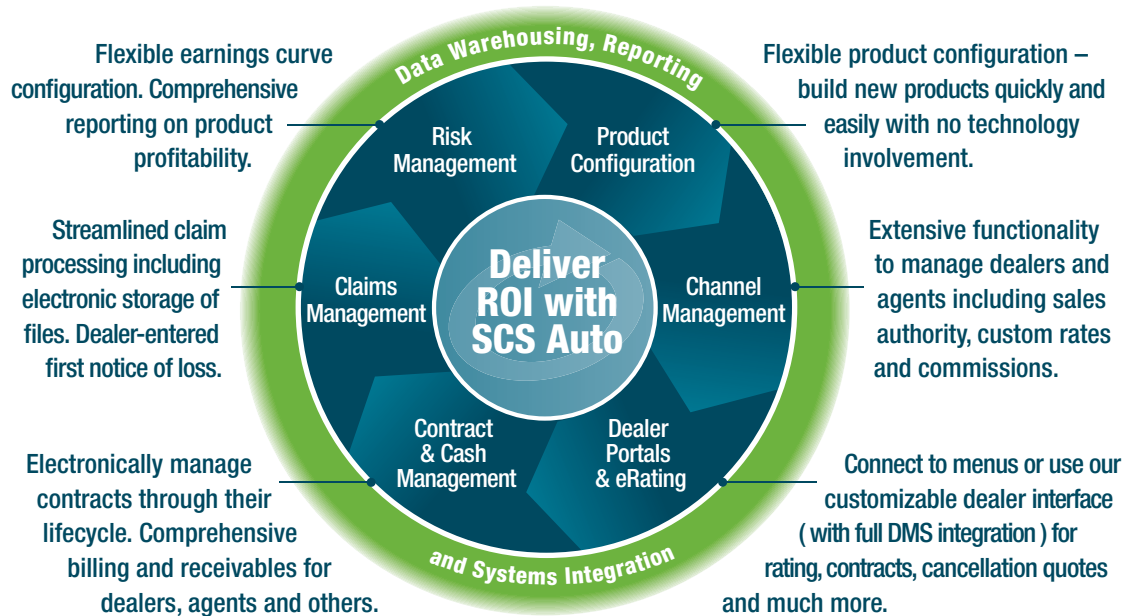
MANAGE all products within one system

CONSOLIDATE your billing

ELIMINATE technology challenges

DO MORE with fewer resources

Take your business to the next level. To learn more, contact David Trinder today at **631.418.5220** or **dtrinder@fiadmin.com**
www.fiadmin.com



F&I Admin delivers the next generation of online VSC administration... accelerate your workflow and build your business.

SCS Auto VSC includes everything you need to run your back office, including an electronic link to all your partners.

In an increasingly competitive marketplace, you need to increase sales while reducing overhead. F&I Admin provides the only fully integrated F&I platform that will allow you to grow your business without adding overhead. SCS Auto VSC helps you manage all products, contracts and claims through an online solution, giving you the features and functionality you need, with security you can trust.

Drive your business forward.

SCS Auto offers a fully integrated workflow management solution that streamlines the administration of all F&I products including VSC, GAP, dent repair, prepaid maintenance, appearance protection, etch and others. It is a comprehensive solution that saves time while increasing efficiencies.

Delivering:

- Electronic storage of all documents
- Seamless integration with enterprise systems
- New products to market in days
- Extensive options for product configuration
- Full integration with a growing number of menu and DMS systems
- Extensive reporting capability
- A fully hosted solution at a state-of-the-art facility
- Security and reliability 24/7
- Improved customer satisfaction with integrated communication tools
- Access to data when and where you need it
- Web access to contracts and reports for dealers and agents
- Pre-populated customized electronic documents for customer and dealer communication

